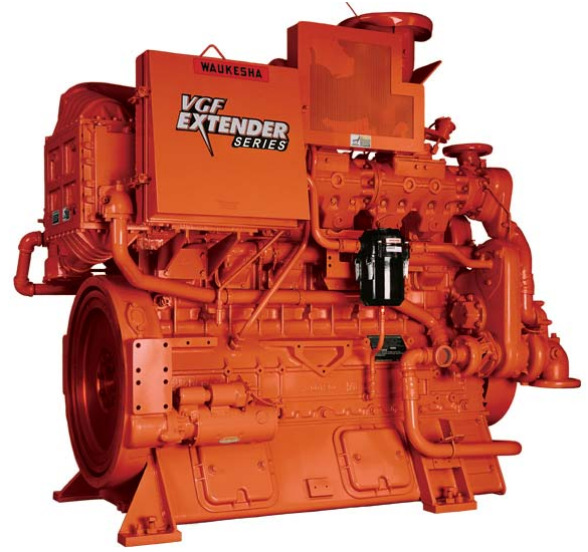


Waukesha* gas engines VGF* F18GSID

310-400 BHP (230-300 kWb)



The VGF series of high-speed engines are built with the durability expected from a medium-speed engine. This series of engines is designed for a wide range of stationary, spark-ignited, gaseous fuel applications and has a high power-to-weight ratio operating up to 1800 RPM.

The VGF Series simplifies maintenance procedures. The engine design allows easy access to the oil pump, main bearings and rod bearings—without the need to lower the oil pan. Commonality of parts between VGF models reduces the amount of inventory needed for servicing a fleet. Standard design features, such as independent heads, simplify maintenance work.

technical data

Cylinders	Inline 6	
Piston displacement	1096 cu. in. (18 L)	
Compression ratio	8.6:1	
Bore & stroke	5.98" x 6.5" (152 x 165 mm)	
Jacket water system capacity	16 gal. (60 L)	
Lube oil capacity	44 gal. (166 L)	
Low Fuel Pressure Range (According to regulator used)	8" WC - 5 psig (0.02 - 0.34 bar)	
Starting system	150 psi max. air/gas 24V DC electric	
Cooling Water Flow at	1500 rpm	1800 rpm
Jacket Water gpm (l/m)	103 (390)	130 (492)
Aux. Water gpm (l/m)	25 (95)	35 (133)

Dimensions l x w x h inch (mm)

80.5 (2043) x 48 (1218) x 68.4 (1737)

Weights lb (kg)

5725 (2600)



imagination at work

performance data

Intercooler Water Temperature 130°F (54°C)

		1800 RPM	1500 RPM
	Power bhp (kWb)	400 (300)	335 (250)
	BSFC (LHV) Btu/bhp-hr (kJ/kWh)	7524 (10588)	7352 (10391)
	Fuel Consumption Btu/hr x 1000 (kW)	3009 (882)	2463 (722)
Emissions	NO _x g/bhp-hr (mg/Nm ³ @ 5% O ₂)	16.00 (5926)	16.00 (5926)
	CO g/bhp-hr (mg/Nm ³ @ 5% O ₂)	8.00 (2963)	8.00 (2963)
	NMHC g/bhp-hr (mg/Nm ³ @ 5% O ₂)	0.25 (93)	0.25 (93)
	THC g/bhp-hr (mg/Nm ³ @ 5% O ₂)	1.50 (556)	1.50 (556)
Heat Balance	Heat to Jacket Water Btu/hr x 1000 (kW)	901 (264)	748 (219)
	Heat to Lube Oil Btu/hr x 1000 (kW)	166 (49)	125 (37)
	Heat to Intercooler Btu/hr x 1000 (kW)	64 (19)	43 (13)
	Heat to Radiation Btu/hr x 1000 (kW)	112 (33)	104 (31)
	Total Exhaust Heat Btu/hr x 1000 (kW)	805 (236)	637 (187)
Intake/ Exhaust System	Induction Air Flow scfm (Nm ³ /hr)	590 (907)	483 (743)
	Exhaust Flow lb/hr (kg/hr)	2627 (1192)	2151 (976)
	Exhaust Temperature °F (°C)	1116 (602)	1076 (580)

All data according to full load and subject to technical development and modification.

Consult your local GE Power & Water's representative for system application assistance. The manufacturer reserves the right to change or modify without notice, the design or equipment specifications as herein set forth without incurring any obligation either with respect to equipment previously sold or in the process of construction except where otherwise specifically guaranteed by the manufacturer.



GE Power & Water
1101 West Saint Paul Ave.
Waukesha, WI 53188-4999
P: 1.262.547.3311
F: 1.262.549.2759

Visit us online at:
www.ge-waukesha.com

©2013 General Electric Company
All Rights Reserved

7074 0413 GEA-19032